

# GREEN BOILER TECHNOLOGIES

## A2000 SERIES WATER BOILERS

### TYPICAL SPECIFICATION

Water Boiler shall be Green Boiler Technologies, model number \_\_\_\_\_ having an input rating of \_\_\_\_\_ BTU/HR, and \_\_\_\_\_ BTU/HR output, and shall be operated on natural or propane gas.

The heat exchanger waterway will be non-ferrous, helically wound in an hourglass continuous coil. The water containing sections shall be of 1 ¼" I.D. copper-fin tube construction having extruded integral fins spaced 7 fins per inch. The tubes shall be brazed to an all bronze inlet/outlet. The heat exchanger shall be built in accordance with ASME Section IV, designed for a working pressure of 160 PSIG and bear the "H" stamp. The entire heat exchanger shall carry a limited 10-year warranty, and a lifetime warranty against the effects of thermal shock.

The atmospheric burner shall be constructed of cast iron with multiple bronze orifice jets combined to form one "Turbulated Combustion Efficient Flame." The burner shall operate on natural or propane gas. The unit shall include a gas pressure regulator and Standard, 2-Stage, or CSD-1 gas train.

The entire unit will be factory assembled with stainless steel exterior jacketing, wired and factory fire tested. Water boiler shall be furnished with IID (intermittent pilot burner ignition system) with 90 second or less shut-off response to pilot failure. CSD-1 water boilers shall be furnished with IID (intermittent pilot burner ignition system) with 15 second or less shut-off response to pilot failure. Water boiler shall be equipped with a manual reset high limit aquastat.

Water boiler shall be third party certified and approved as a Category I appliance using type B vent material.

# GREEN BOILER TECHNOLOGIES

## A2000 SERIES WATER BOILERS

### SUBMITTAL

JOB NAME \_\_\_\_\_

LOCATION \_\_\_\_\_

ARCH./ENGR. \_\_\_\_\_

WHOLESALE/REP. \_\_\_\_\_

MECH. CONTRACTOR \_\_\_\_\_

TAG: \_\_\_\_\_

MODEL NO. \_\_\_\_\_ BTU INPUT \_\_\_\_\_ BTU OUTPUT \_\_\_\_\_ TYPE GAS \_\_\_\_\_

OPTIONAL EQUIPMENT \_\_\_\_\_

\_\_\_\_\_

\_\_\_\_\_

#### STANDARD EQUIPMENT

Hourglass copper fin tube heat exchanger  
Electronic spark ignition  
24-volt control system  
Cast iron burner w/ bronze orifices  
ASME 125# pressure relief valve  
Manually operated gas cock  
Manual reset high limit aquastat  
Enclosed control panel  
24-volt main gas valve  
Draft hood  
Drain cock  
Gas pressure regulator  
Bronze inlet & outlet manifold  
ASME 160# design pressure  
Stainless steel exterior jacket

#### OPTIONAL EQUIPMENT

Circulating pump  
Pump delay  
2-Stage gas train  
CSD-1 gas train  
Flow switch  
Thermometer  
T & P dial gauge  
Low water cut-off

# GREEN BOILER TECHNOLOGIES

## A2000 SERIES WATER BOILERS

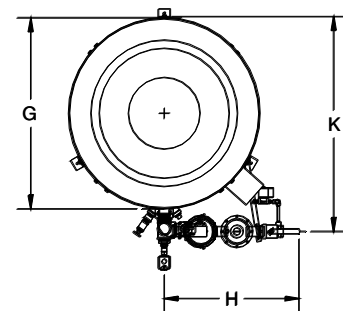
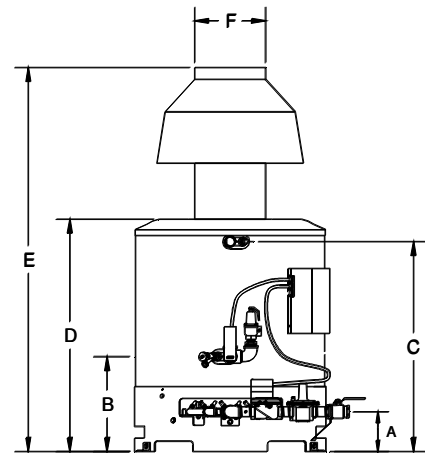
### DIMENSIONS AND SPECIFICATIONS

MODEL	BTU INPUT	BTU OUTPUT	GAS CONN	WATER CONN	VENT	SHIPPING WEIGHT
A2B035	350,000	280,000	1"	1 1/2"	9"	460#
A2B050	500,000	400,000	1"	1 1/2"	10"	600#
A2B070	700,000	560,000	1 1/4"	1 1/2"	12"	650#
A2B097	970,000	776,000	1 1/4"	1 1/2"	16"	700#
A2B120	1,200,000	960,000	1 1/2"	1 1/2"	16"	804#
A2B140	1,400,000	1,120,000	1 1/2"	1 1/2"	18"	944#

MODEL	A	B	C	D	E	F	G	H	K
A2B035	7	17 1/2	34 1/2	38	58	9	24	10	29
A2B050	8	16 1/2	33	42	69	10	28	18 1/2	33
A2B070	10 1/4	13 1/4	33	38 3/4	66	12	32	25	36 1/4
A2B097	6 3/4	17 3/4	38	41 1/4	77 1/4	16	35	20	43
A2B120	7	17 1/2	44 1/2	48 1/2	84 1/2	16	35	22	43
A2B140	7	17 1/2	44 1/2	48 1/2	100 1/2	18	35	22	43

#### NOTES:

1. Dimensions are for units with standard gas trains.
2. For CSD-1 gas trains add 4" to dimension "H"
3. All dimensions are in inches.
4. Change the "B" to "C" for CSD-1 models



ASME Section IV, Water  
Heater Code 160 PSI working  
Pressure and National Board  
Registered.